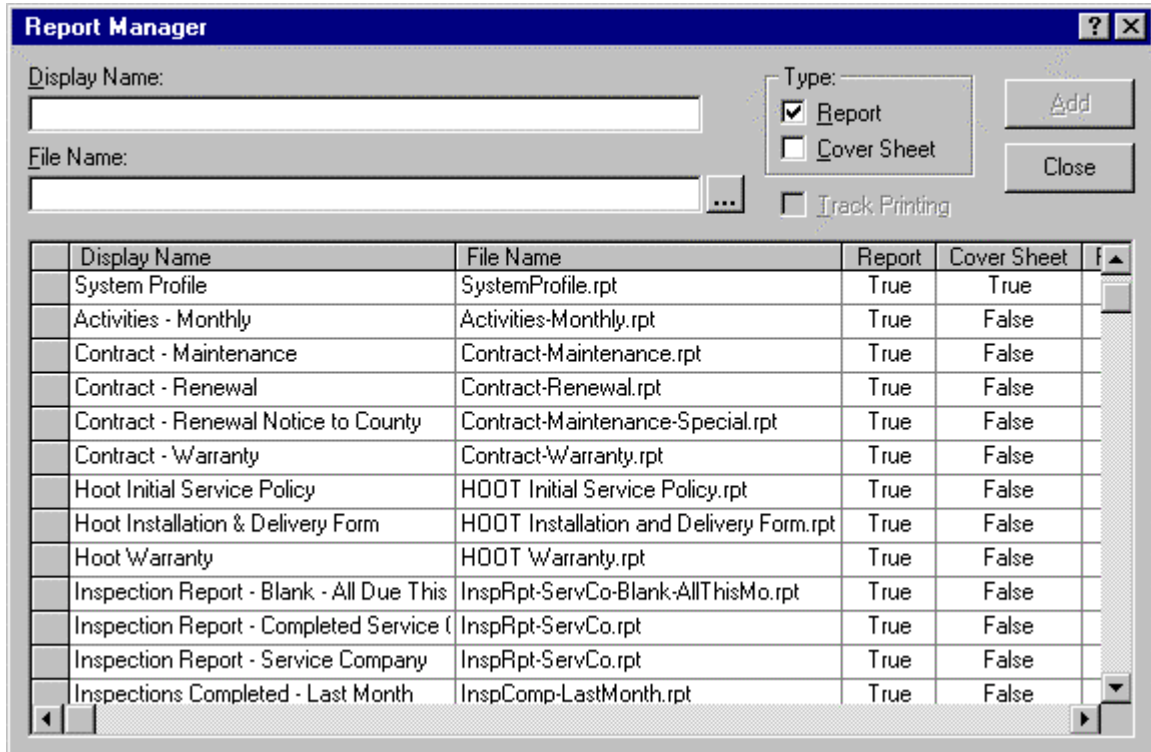




- Repeat steps 1 thru 5 for each report on the accompanying pages that you wish to add to the list of available reports.

When you have added reports to the list of available reports, the "Report Manager" window will look similar to the one displayed below. Don't be concerned if yours does not exactly match the one displayed.



When you have added all of the reports that you want to add to the list, click the "Close" button to close this dialog box and save your work.

Now you can open the "Reports" dialog and reports will be available for selection and printing.